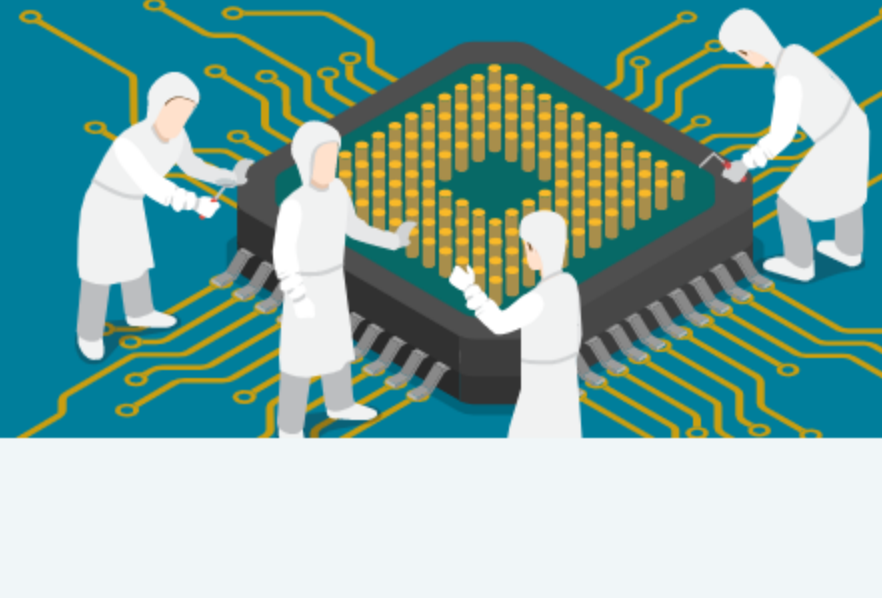


CPU Benchmarks

Over 1,000,000 CPUs Benchmarked



CPU Mega List

Below is a list of all single socket CPU types that appear in the charts. By clicking the column headings you can sort the CPUs. You can also filter your search by selecting one of the drop down categories or by using the range sliders. Clicking on a specific processor name will take you to the chart it appears in and will highlight it for you.

Single CPU Systems Last Updated: 1st of June 2020

Columns

Show 250 entries

CPU Name	CPU Mark	Thread Mark	TDP (W)		Socket	Category
			Min.	Max.		
Intel Xeon W-2245 @ 3.90GHz	19.747	2,815	155		FCLGA2066	Desktop, Server
Intel Core i7-12700K @ 3.80GHz	19.681	2,857	125		FCLGA1200	Desktop
Intel Core i9-9900KS @ 4.00GHz	19.226	3,099	127		FCLGA1151-2	Desktop
Intel Core i9-9900K @ 3.60GHz	18.921	2,994	95		FCLGA1151-2	Desktop
Intel Core i9-9900KF @ 3.60GHz	18.844	3,016	95		FCLGA1151-2	Desktop
AMD Ryzen 5 3600X	18.321	2,874	95		AM4	Desktop
Intel Core i7-9800X @ 3.80GHz	18.289	2,833	165		FCLGA2066	Desktop
AMD Ryzen 5 PRO 3600	18.265	2,856	65		AM4	Desktop
Intel Core i7-7520X @ 3.60GHz	17.786	2,515	140		FCLGA2066	Desktop
AMD Ryzen 5 3600	17.785	2,577	65		AM4	Desktop
AMD Ryzen 7 PRO 2700X	17.634	2,403	105		AM4	Desktop
AMD Ryzen 7 2700X	17.590	2,440	105		AM4	Desktop
Intel Core i9-9900 @ 3.10GHz	17.495	2,832	65		FCLGA1151-2	Desktop
Intel Core i7-6950X @ 3.00GHz	17.264	2,403	140		LGA2011-v3	Desktop
AMD Ryzen Threadripper 1900X	17.108	2,367	180		sTR4	Desktop
AMD Ryzen 7 1800X	16.245	2,165	95		AM4	Desktop
AMD Ryzen 7 PRO 1700X	15.870	2,217	95		AM4	Desktop
AMD Ryzen 7 2700	15.847	2,224	65		AM4	Desktop
Intel Core i5-10500K @ 4.10GHz	15.678	3,069	125		FCLGA1200	Desktop
AMD Ryzen 7 1700X	15.664	2,077	95		AM4	Desktop
AMD Ryzen 7 PRO 2700	15.251	2,329	65		AM4	Desktop
Intel Core i7-8086K @ 4.00GHz	14.869	2,939	95		FCLGA1151-2	Desktop
Intel Core i7-9700K @ 3.60GHz	14.670	2,923	95		FCLGA1151-2	Desktop
AMD Ryzen 7 2700E	14.647	2,410	45		AM4	Desktop
Intel Core i7-9700KF @ 3.60GHz	14.622	2,933	95		FCLGA1151-2	Desktop
AMD Ryzen 7 1700	14.525	1,984	65		AM4	Desktop
Intel Core i7-6900K @ 3.20GHz	14.408	2,481	140		FCLGA2011-3	Desktop
AMD Ryzen 5 2600X	14.111	2,416	95		AM4	Desktop
Intel Core i7-9700F @ 3.00GHz	14.058	2,851	65		FCLGA1151-2	Desktop
AMD Ryzen 7 PRO 1700	14.023	2,916	65		AM4	Desktop
Intel Core i7-6700K @ 3.70GHz	13.855	2,789	95		FCLGA1151-2	Desktop
Intel Core i7-9700 @ 3.00GHz	13.826	2,825	65		FCLGA1151-2	Desktop
Intel Core i9-9900T @ 2.10GHz	13.770	2,469	35		FCLGA1151-2	Desktop
AMD Ryzen 5 PRO 2600	13.737	2,279	65		AM4	Desktop
AMD Ryzen 5 3500X	13.407	2,522	65		AM4	Desktop
AMD Ryzen 5 2600	13.284	2,268	65		AM4	Desktop
Intel Core i7-8700 @ 3.20GHz	13.215	2,697	65		FCLGA1151-2	Desktop
AMD Ryzen 5 1600X	13.147	2,197	95		AM4	Desktop
Intel Core i5-10400 @ 2.90GHz	13.073	2,615	65		FCLGA1200	Desktop
Intel Core i7-7800X @ 3.50GHz	13.005	2,491	140		FCLGA2066	Desktop
AMD Ryzen 3 3300X	12.869	2,712	65		AM4	Desktop
AMD Ryzen 5 3500	12.690	2,462	65		AM4	Desktop
AMD Ryzen 5 1600	12.532	2,113	65		AM4	Desktop
Intel Core i7-5960X @ 3.00GHz	12.500	1,993	140		LGA2011-v3	Desktop
AMD Ryzen 3 3100	12.005	2,467	65		AM4	Desktop
Intel Core i7-6850K @ 3.60GHz	11.358	2,461	140		FCLGA2011-3	Desktop
Intel Core i7-5700T @ 2.00GHz	11.106	2,563	35		FCLGA1151-2	Desktop
Intel Core i7-5700TE @ 1.80GHz	10.954	2,386	35		FCLGA1151-2	Desktop, Laptop
Intel Core i5-9600KF @ 3.70GHz	10.932	2,811	95		FCLGA1151-2	Desktop
Intel Core i5-9600 @ 3.10GHz	10.919	2,826	65		FCLGA1151-2	Desktop
Intel Core i5-9600K @ 3.70GHz	10.884	2,787	95		FCLGA1151-2	Desktop
Intel Core i7-8700T @ 2.40GHz	10.827	1,388	35		FCLGA1151-2	Desktop
AMD Ryzen 5 PRO 1600	10.758	2,728	65		AM4	Desktop
Intel Core i5-9500F @ 3.00GHz	10.474	2,691	65		FCLGA1151-2	Desktop
Intel Core i7-6800K @ 3.40GHz	10.462	2,260	140		LGA2011-v3	Desktop
Intel Core i7-5930K @ 3.50GHz	10.276	2,937	140		LGA2011-v3	Desktop
Intel Core i5-8600K @ 3.60GHz	10.183	2,647	95		FCLGA1151-2	Desktop
Intel Core i5-8600 @ 3.10GHz	9.985	2,865	65		FCLGA1151-2	Desktop
AMD Ryzen 5 PRO 1500	9.809	2,203	65		AM4	Desktop
Intel Core i7-7700K @ 4.20GHz	9.760	2,778	95		LGA 1151	Desktop
Intel Core i7-5820K @ 3.30GHz	9.751	2,007	140		LGA2011-v3	Desktop
Intel Core i7-7740X @ 4.30GHz	9.750	2,841	112		FCLGA2066	Desktop
Intel Core i5-9500 @ 3.00GHz	9.703	2,682	65		FCLGA1151-2	Desktop
AMD Ryzen 5 2500X	9.690	2,358	65		AM4	Desktop
Intel Core i5-9400F @ 3.60GHz	9.596	1,992	130		LGA2011	Desktop
Intel Core i5-9400 @ 2.90GHz	9.570	2,491	65		FCLGA1151-2	Desktop, Laptop
Intel Core i7-4930K @ 3.40GHz	9.551	1,951	130		LGA2011	Desktop
Intel Core i5-9400 @ 2.90GHz	9.524	2,521	65		FCLGA1151-2	Desktop
AMD Ryzen 5 PRO 3400G	9.522	2,318	65		AM4	Desktop
Intel Core i5-9600T @ 2.30GHz	9.513	2,433	35		FCLGA1151-2	Desktop
AMD Ryzen 5 3400G	9.382	2,381	65		AM4	Desktop
Intel Core i5-8500 @ 3.00GHz	9.391	2,475	65		FCLGA1151-2	Desktop
Intel Core i5-8400 @ 2.80GHz	9.247	2,422	65		FCLGA1151-2	Desktop
Intel Core i7-9850HL @ 1.90GHz	9.216	2,152	25		FBCGA1440	Desktop, Laptop
Intel Core i5-8600T @ 2.30GHz	9.088	2,273	35		FCLGA1151-2	Desktop
Intel Core i7-6700K @ 4.00GHz	9.011	2,534	95		LGA1151	Desktop
AMD Ryzen 5 1500X	8.982	2,073	65		AM4	Desktop
Intel Xeon W-2223 @ 3.60GHz	8.853	2,304	120		FCLGA2066	Desktop, Server
AMD Ryzen 5 2400G	8.840	2,187	65		AM4	Desktop
Intel Core i7-3960X @ 3.30GHz	8.795	1,777	130		LGA1151	Desktop
Intel Core i7-7700 @ 3.60GHz	8.611	2,481	65		LGA2011	Desktop
Intel Core i7-3970X @ 3.50GHz	8.588	1,905	150		LGA2011	Desktop
AMD Ryzen 5 PRO 2400G	8.584	2,218	65		AM4	Desktop
AMD Ryzen 5 3400GE	8.565	2,312	35		AM4	Desktop
Intel Core i5-10300H @ 2.50GHz	8.522	2,381	NA		Unknown	Desktop, Laptop
AMD Ryzen 5 PRO 3400GE	8.246	2,276	35		AM4	Desktop
Intel Core i5-8500T @ 2.10GHz	8.167	2,117	35		FCLGA1151-2	Desktop
Intel Core i5-9500T @ 2.20GHz	8.166	2,186	35		FCLGA1151-2	Desktop
Intel Core i7-4790K @ 4.00GHz	8.095	2,484	88		LGA1150	Desktop
Intel Core i7-6700 @ 3.40GHz	8.088	2,305	65		LGA 1151	Desktop
Intel Core i7-3930K @ 3.20GHz	8.071	1,716	130		LGA2011	Desktop
Intel Core i3-9350KF @ 4.00GHz	8.001	2,859	91		FCLGA1151-2	Desktop
AMD Ryzen 5 1400	7.968	1,942	65		AM4	Desktop
AMD Ryzen 3 2300X	7.828	2,384	65		AM4	Desktop
AMD Ryzen 3 PRO 1300	7.825	2,222	65		AM4	Desktop
Intel Core i7-7700T @ 2.90GHz	7.813	2,267	35		FCLGA1151	Desktop
Intel Core i5-8400T @ 1.70GHz	7.763	2,062	35		FCLGA1151-2	Desktop
Intel Core i7-5775C @ 3.30GHz	7.747	2,279	65		FCLGA1150	Desktop
Intel Core i5-9400T @ 1.80GHz	7.683	2,016	35		FCLGA1151-2	Desktop
AMD Ryzen Embedded V1756B	7.627	2,086	45		FPS	Desktop
AMD Ryzen 5 PRO 2400GE	7.601	2,214	35		AM4	Desktop
Intel Core i7-5775R @ 3.30GHz	7.590	2,204	65		LGA1150	Desktop
Intel Core i3-9320 @ 3.70GHz	7.541	2,751	62		FCLGA1151-2	Desktop
AMD Ryzen 5 2400GE	7.500	2,111	35		AM4	Desktop
Intel Core i3-9300 @ 3.70GHz	7.447	2,726	62		FCLGA1151-2	Desktop
Intel Core i7-6700T @ 2.80GHz	7.391	2,118	35		LGA 1151	Desktop
AMD Ryzen 3 PRO 3200G	7.354	2,307	65		AM4	Desktop
Intel Core i7-590X @ 3.47GHz	7.284	1,595	130		LGA1366	Desktop
AMD Ryzen 3 3200G	7.259	2,226	65		AM4	Desktop
Intel Core i7-4790 @ 3.60GHz	7.230	2,229	84		FCLGA1150	Desktop
Intel Core i7-9950X @ 3.60GHz	7.128	1,667	NA		Unknown	Desktop
Intel Core i7-4770 @ 3.40GHz	7.076	2,174	84		LGA1150	Desktop
Intel Core i7-4770K @ 3.50GHz	7.028	2,144	84		LGA1150	Desktop
AMD Ryzen 3 1300X	7.001	2,007	65		AM4	Desktop
Intel Core i7-580 @ 3.33GHz	6.888	1,531	130		LGA1366	Desktop
Intel Core i3-8350K @ 4.00GHz	6.884	2,485	91		FCLGA1151-2	Desktop
Intel Core i7-4771 @ 3.50GHz	6.884	1,899	84		LGA1150	Desktop
AMD Ryzen 3 PRO 1200	6.848	1,872	65		AM4	Desktop
Intel Core i3-9100F @ 3.60GHz	6.834	2,513	65		FCLGA1151-2	Desktop
Intel Core i7-4790S @ 3.20GHz	6.809	2,211	65		LGA1150	Desktop
Intel Core i7-4770S @ 3.10GHz	6.799	2,163	65		LGA1150	Desktop
Intel Core i3-9100 @ 3.60GHz	6.775	2,564	65		FCLGA1151-2	Desktop
Intel Core i3-10100 @ 3.60GHz	6.769	2,705	65		FCLGA1200	Desktop
Intel Core i5-7600K @ 3.80GHz	6.737	2,540	91		FCLGA1151	Desktop
AMD Ryzen 3 2200G	6.731	2,052	65		AM4	Desktop
Intel Core i7-970 @ 3.20GHz	6.724	1,483	130		LGA1366	Desktop
Intel Core i7-6700TE @ 2.40GHz	6.680	2,111	35		LGA 1151	Desktop
AMD FX-9590 Eight-Core	6.649	1,806	220		AM3+	Desktop
Intel Core i7-4770R @ 3.20GHz	6.638	2,136	65		FBCGA1364	Desktop
AMD Ryzen 3 PRO 2200G	6.619	2,148	65		AM4	Desktop
Intel Core i5-7600 @ 3.50GHz	6.610	2,467	65		FCLGA1151	Desktop
Intel Core i7-580X @ 3.33GHz	6.606	1,537	130		LGA1366	Desktop
Intel Core i7-4790T @ 2.70GHz	6.526	2,207	45		LGA1150	Desktop
Intel Core i3-9300T @ 3.20GHz	6.525	2,408	35		FCLGA1151-2	Desktop
Intel Core i7-4820K @ 3.70GHz	6.514	1,882	130		FCLGA2011	Desktop
Intel Core i3-8300 @ 3.70GHz	6.512	2,322	62		FCLGA1151-2	Desktop
Intel Core i7-3770K @ 3.50GHz	6.447	2,079	77		LGA1155	Desktop
Intel Core i7-3770 @ 3.40GHz	6.368	2,061	77		LGA1155	Desktop
AMD Ryzen 3 1200	6.335	1,927	65		AM4	Desktop
Intel Core i5-7600T @ 2.80GHz	6.252	2,256	35		FCLGA1151	Desktop
AMD Ryzen 3 PRO 2200GE	6.248	2,093	35		AM4	Desktop
Intel Core i5-6600K @ 3.50GHz	6.237	2,304	91		FCLGA1151	Desktop
Intel Core i3-8100 @ 3.60GHz	6.215	2,261	65		FCLGA1151-2	Desktop
Intel Core i5-6600 @ 3.30GHz	6.196	2,301	65		LGA 1151	Desktop
Intel Core i5-7500 @ 3.40GHz	6.185	2,289	65		LGA115	